

INSTALLATION GUIDE

ISense, Slide & Lift

March 2023

Version 1.0 Revision 0.0

ISense, Slide & Lift Ports

*Laundry Jet
2001 Challenger Avenue
Oroville, CA 95965*

Document Revisions

Date	Version Number	Document Changes
3/13/2023	1.0 Rev 0.0	Laundry Jet Installation Guide - Ports



FOR ADDITIONAL HELP INCLUDING
INSTRUCTIONAL VIDEOS

Table of Contents

1	Introduction	4
2	Contents	5
3	Pipe Installation Overview	6-9
	3 - Components & Tools	6
	3.1 - Pipe Installation Standards	7
	3.2 - Port Drop Installation	8
	3.3 - Port 90 Installation	9
4	ISense Port Installation	10-14
	4 - Components & Tools	10
	4.1 - Port 90 Mount Bracket & Port Mount Bracket	11-12
	4.2 - ISense Port Sheetrock Template	13
	4.3 - ISense Port Installation	14
5	Slide Port Installation	15-19
	5 - Components & Tools	15
	5.1 - Port 90 Mount Bracket & Port Mount Bracket	16-17
	5.2 - Slide Port Sheetrock Template	18
	5.3 - Slide Port Installation	19
6	Lift Port Installation	20-23
	6 - Components & Tools	20
	6.1 - Port 90 Mount Bracket	21
	6.2 - Lift Port Sheetrock Template	22
	6.3 - Lift Port Installation	23
7	Warranty	24



1 Introduction

The Laundry Jet installation is comprised of three elements:

- Laundry Jet Ports mounted in bedrooms, dressing rooms or bathrooms
- The laundry room Wall mounted or Cabinet Mount Vacuum Unit
- The PVC pipe and fittings that connect the ports to the laundry room through the attic space

Vacuum Laundry Pipe

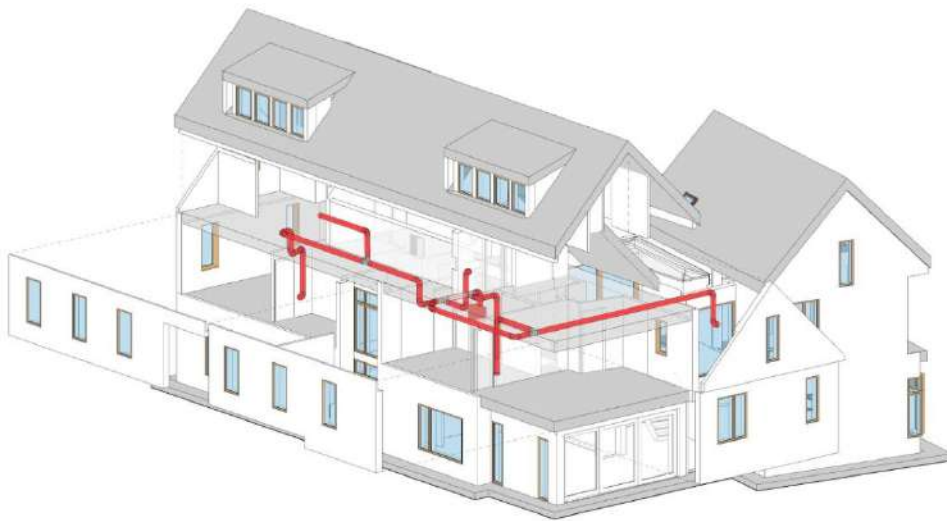
Laundry Jet specifies 6" SDR35 White Solvent Weld PVC pipe and fittings. This piping is light weight to make install quick and easy.

PVC piping is designed to have a smooth transition in between fittings and connections which ensures that clothing, bedding and towels will travel smoothly to the laundry room.

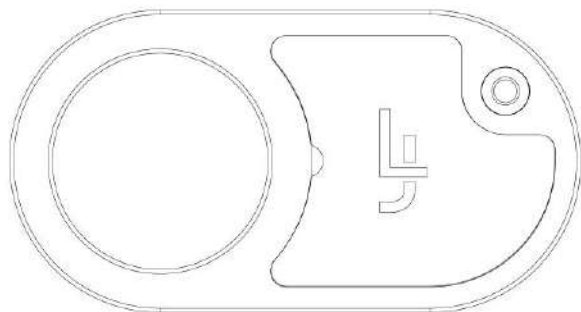
Pipe & Fittings

6" SDR35 White Solvent Weld PVC pipe 10' x 6"

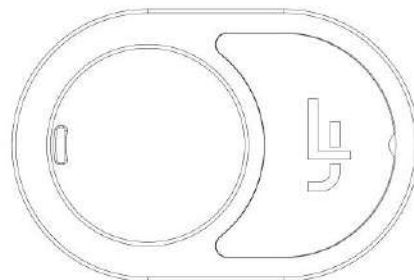
All Fittings are 6" SDR35 White Solvent Weld



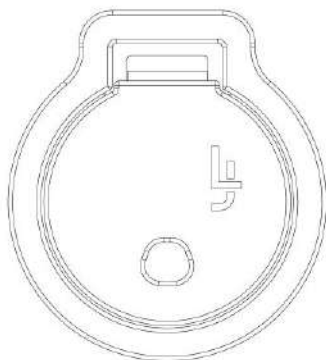
2 Contents



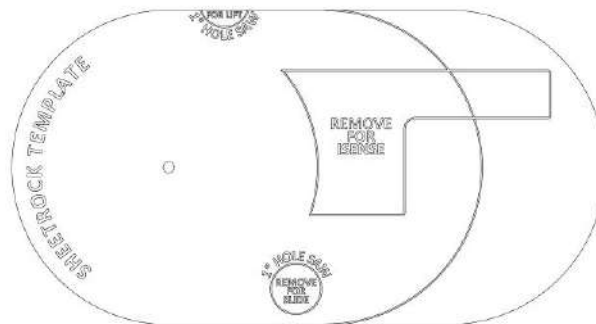
ISense Port



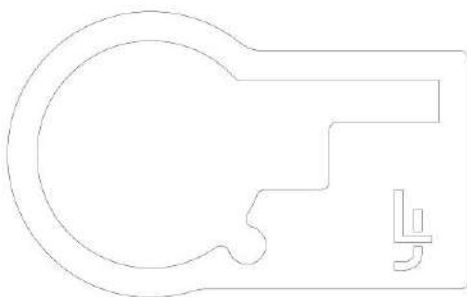
Slide Port



Lift Port



Sheetrock Template



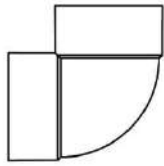
Port Mount Bracket



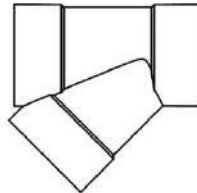
Port 90 Mount Bracket

3 Pipe Installation Overview

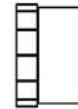
Components



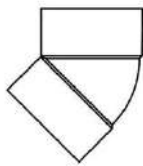
Port 90 Assembly



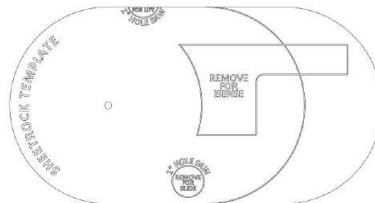
6 Inch Wye



6 Inch Cleanout Adapter



6 Inch 45° Elbow



Sheetrock Template

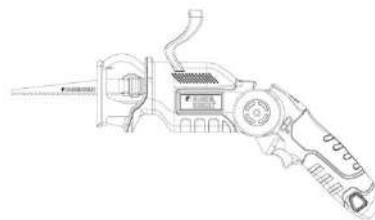


Cable Bundle

Tools



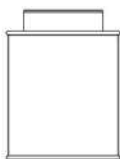
Cordless Drill



Sawzall



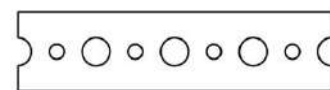
Tape Measure



Clear 2 Part PVC Glue



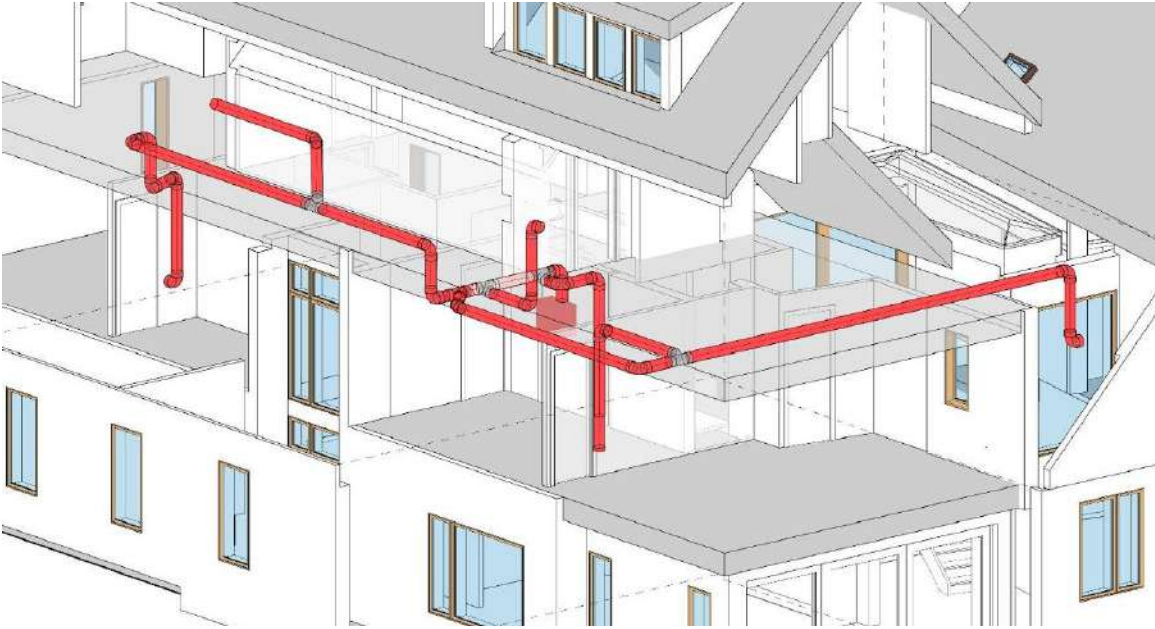
1" Wood Screw



Plumber's Metal Strapping Tape

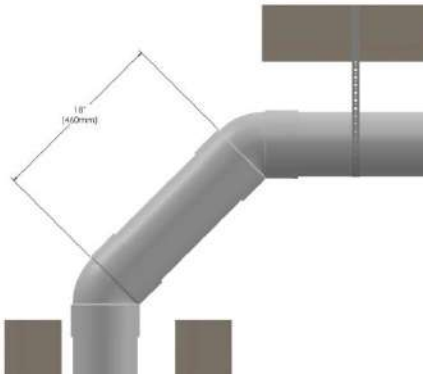
3.1 Pipe Installation Overview

Pipe Installation Standards

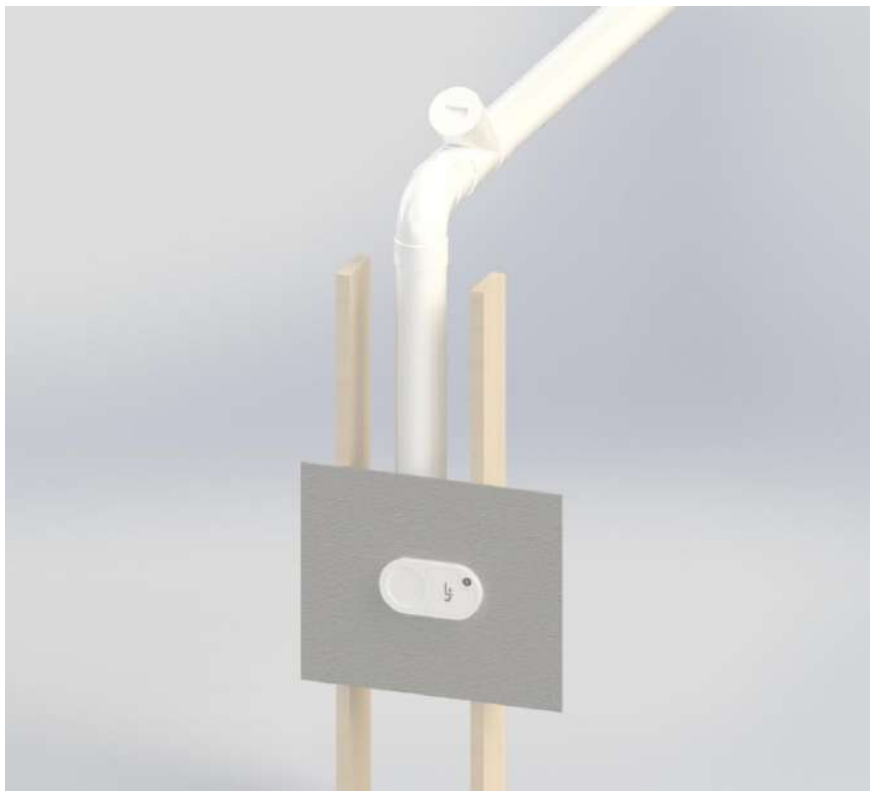


Required Piping Installation Standards

- All joints must use a minimum entry angle of 45 degrees with a break distance of 18 Inches (460 MM). See Image below.
- Pipe cuts must be straight and de burred before seating.
- Pipe must be completely seated in fitting connections.
- Seal all joints using standard PVC glue. Connections must be glued around 360 degrees to ensure maximum system performance.
- System must be strapped with “plumbers tape” (or equivalent) every 6 feet. Port 90 must be strapped and secured prior to Port installation.
- Install Cleanout ports every 50 feet on angled runs. Straight trunk lines can run up to 100 feet with cleanouts at either end.



3.2 Pipe Installation Overview

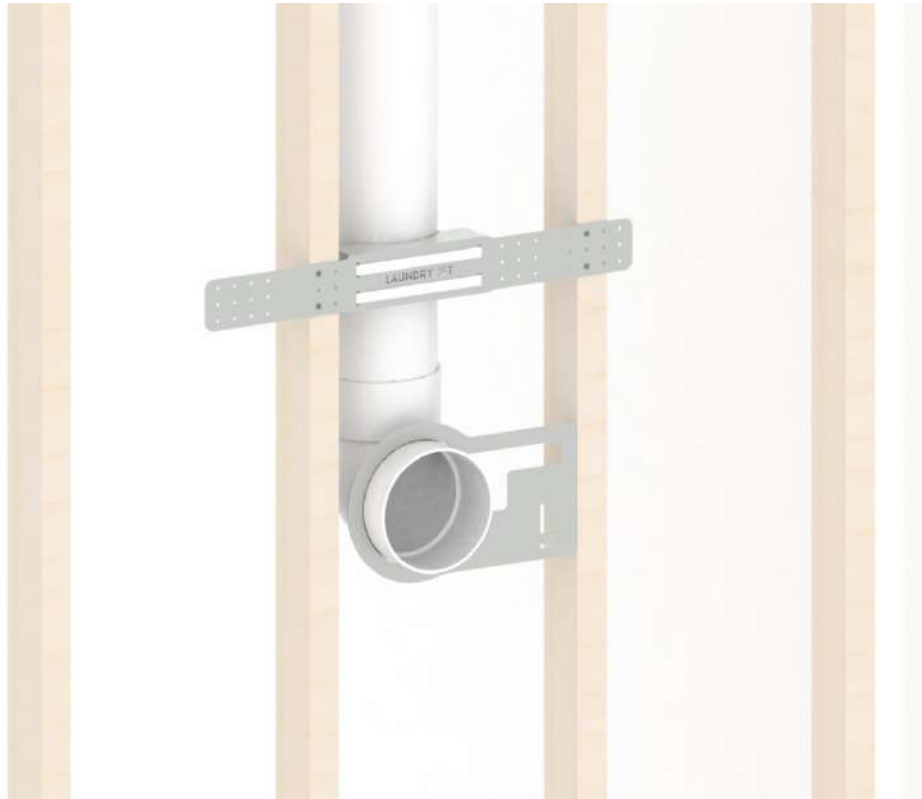


Port Drop Installation

- Mount port 90 using the Pipe Bracket and Port Bracket. See Page 11 for Port 90 Installation. Use a standard SDR 6" Swept 90 for your Port Drop Installation. Block and strap drop line at midway point

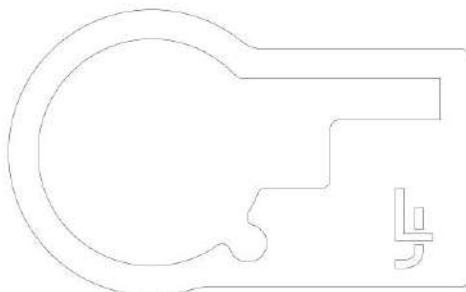


3.3 Pipe Installation Overview



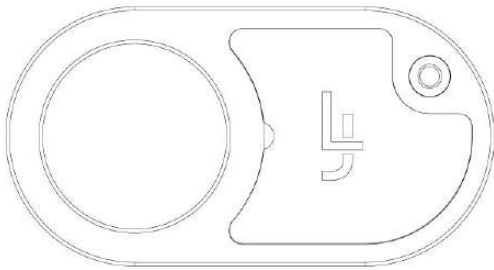
Port 90 Installation

- Port 90 must be installed with front face of Port 90 flush with the finished face of interior wall.
- Port 90 must be installed on a plum horizontal port drop line.
- Use the Port 90 Mount Bracket and Pipe Bracket to align and secure the Port 90 to the frame (unless a remodel)

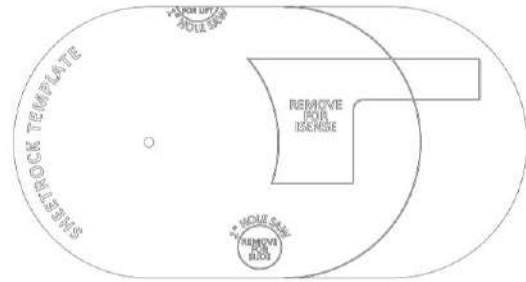


4 ISense Port Installation

Components



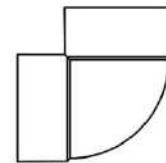
ISense Port



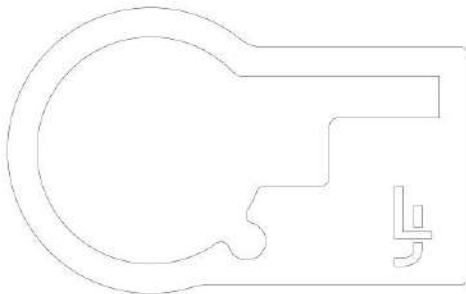
Sheetrock Template



Port 90 Mount Bracket



Port 90



Port Mount Bracket



Mount Bracket Screws

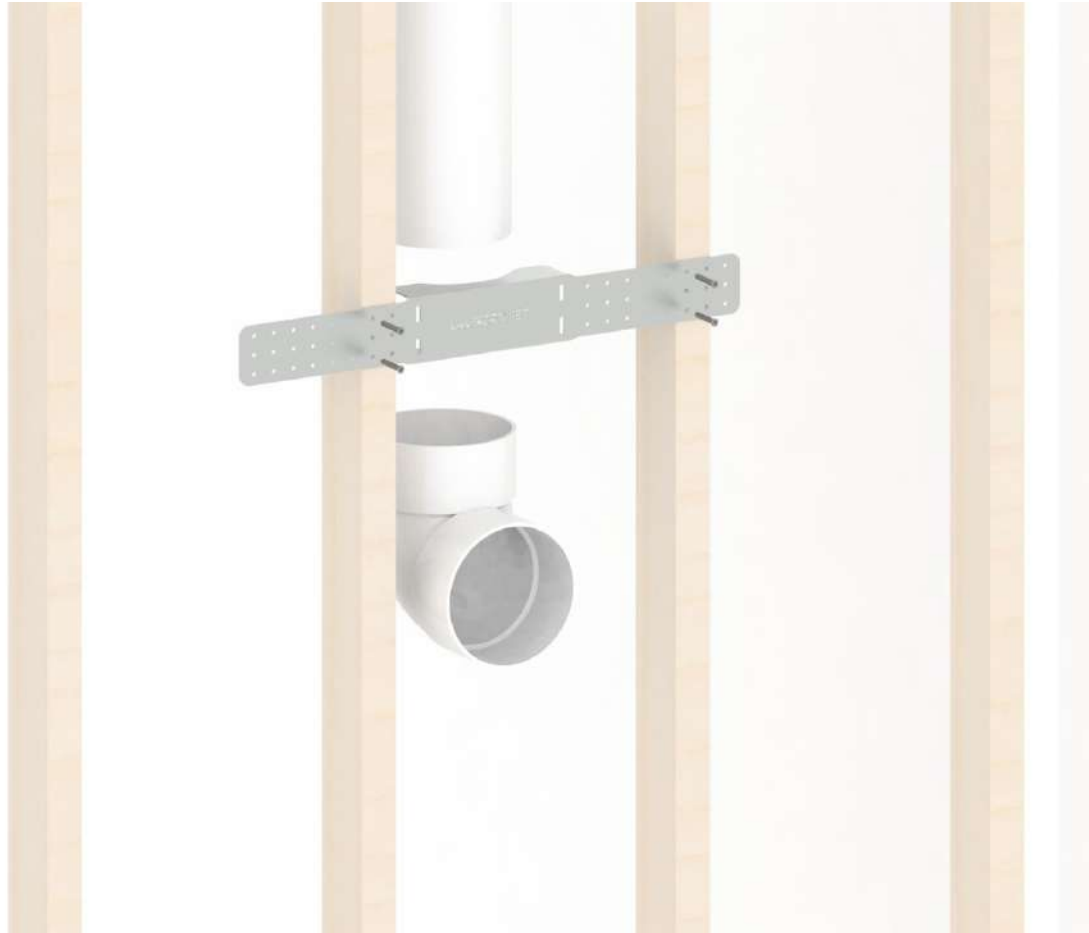


1-1/2" Sheet Metal Screws



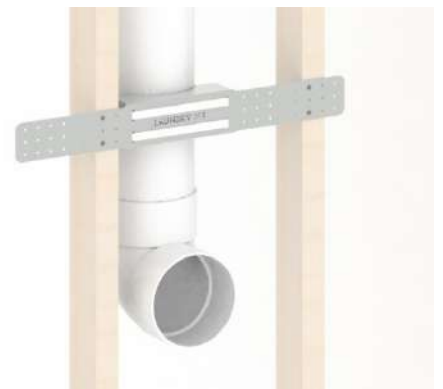
1" Wood Screws

4.1 Step 1 - Port 90 Mount Bracket

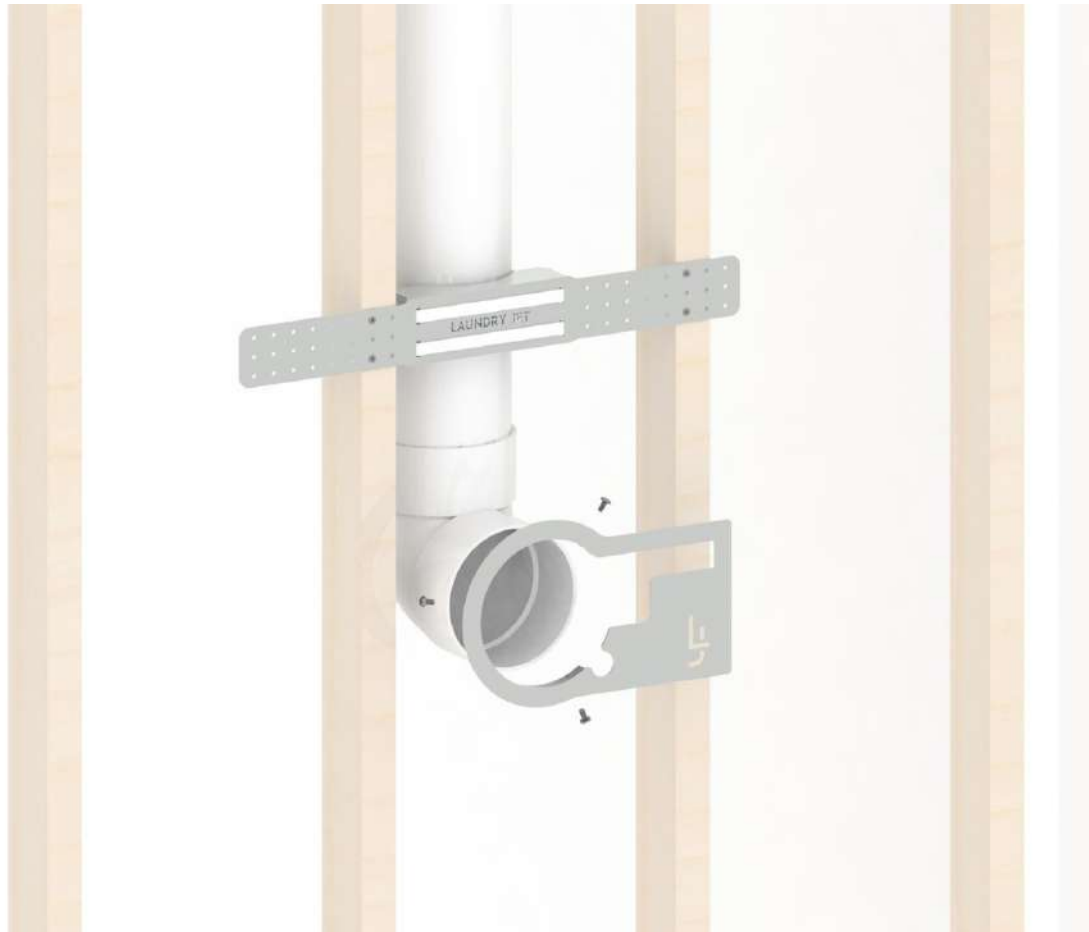


Port 90 Mount Bracket

- Use the Port 90 Mount Bracket to align and secure the Port 90 to the frame
- Set Port height
- Attach 2 pipe clamps
- Set elevation screws
- **Do not install Ports behind doors**



4.2 Step 1 - Port Mount Bracket



Port Mount Bracket

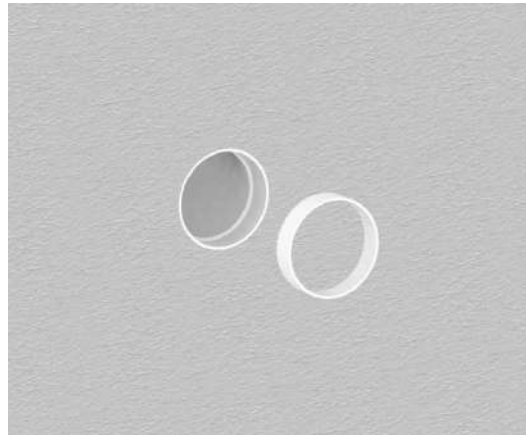
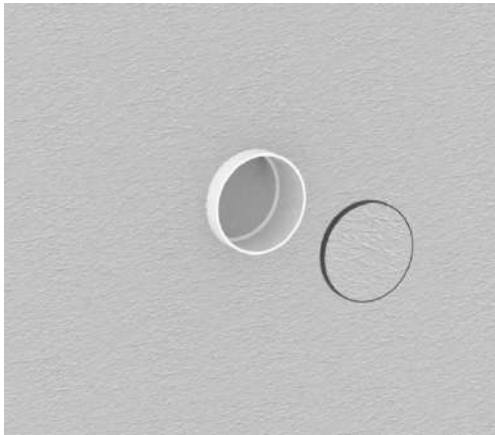
- Mount the Port Mount Bracket around the Port 90
- Make sure the front face of the Port Mount Bracket is flush with the front face of the Port 90 Mount Bracket
- Secure the bracket with the 3 provided screws



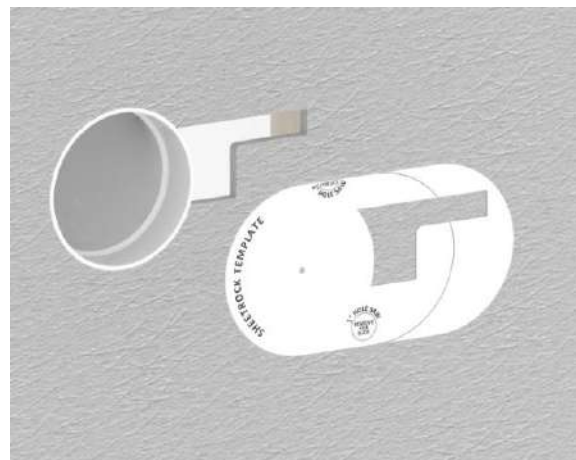
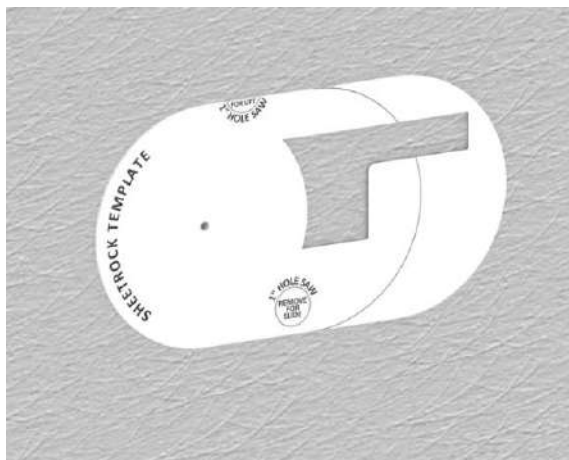
4.3 Step 2 - ISense Sheetrock Template

Sheetrock Template

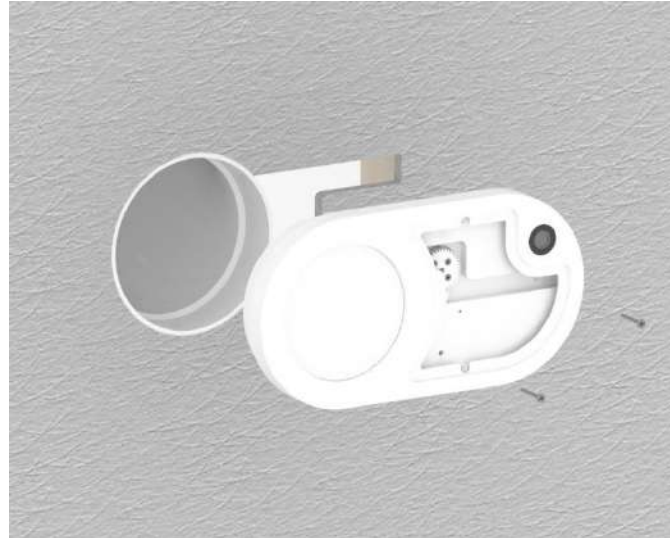
- Install sheetrock over the Port 90 and Port Mount Brackets
- Trim around outside edge of the Port 90 and remove material
- Cut the Port 90 so that it is flush with the sheetrock.



- Remove the section for ISense ports from the Sheetrock Template
- Position the round portion on the back of the template into the Port 90
- Using a level use the top horizontal edge to level the template
- Trace around the inside edge of the cutout on the template onto the sheetrock
- Cut and remove this section

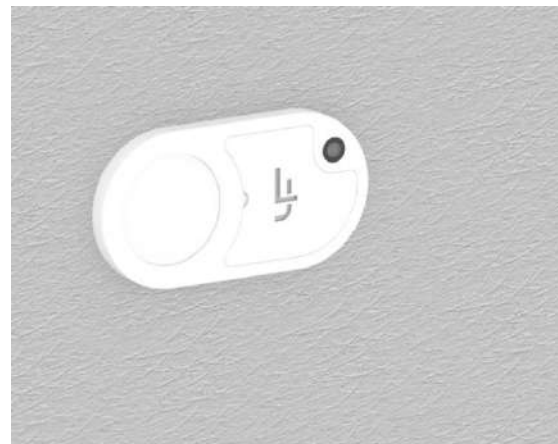


4.4 Step 3 - ISense Port Assembly



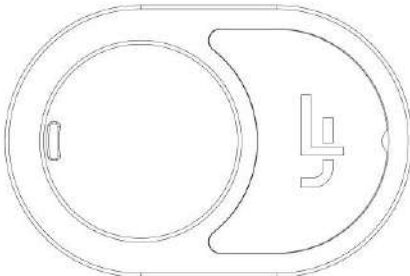
ISense Port Assembly

- Connect RJ45 male connector to female connector on back of port
- Remove the front logo plate and position the Port into place
- Align Port for final adjustment using a level
- Attach port using 2 sheet metal screws. For proper door function, the screws must be flush.
- Reattach the front logo plate

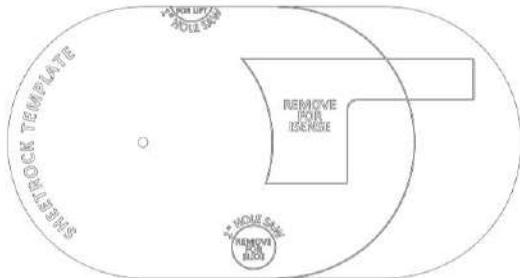


5 Slide Port Installation

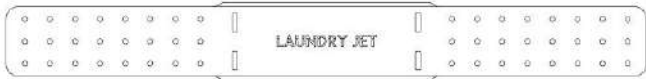
Components



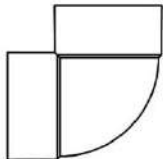
Slide Port



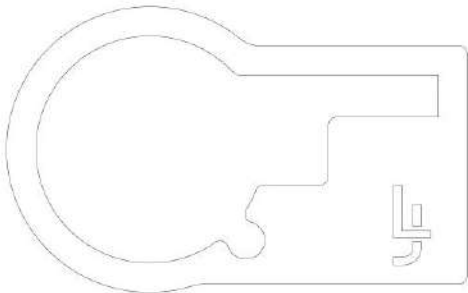
Sheetrock Template



Port 90 Mount Bracket



Port 90



Port Mount Bracket



Mount Bracket Screws

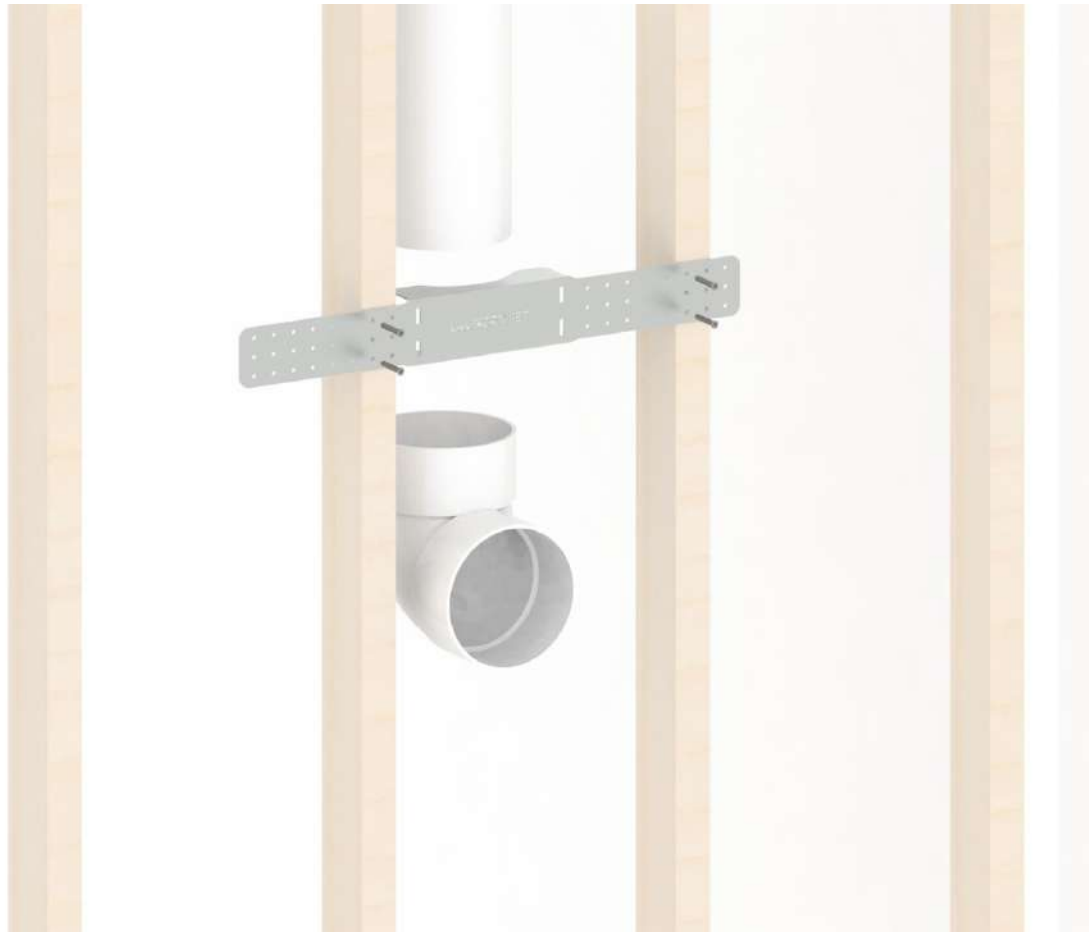


1 inch Sheet Metal Screws



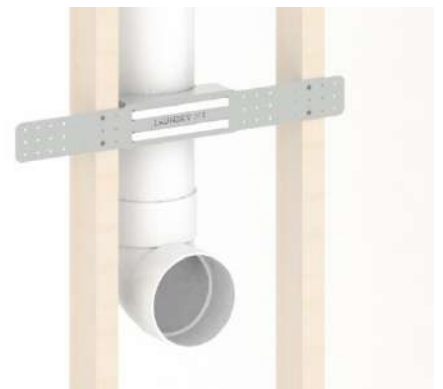
1 inch Wood Screws

5.1 Step 1 - Port 90 Mount Bracket

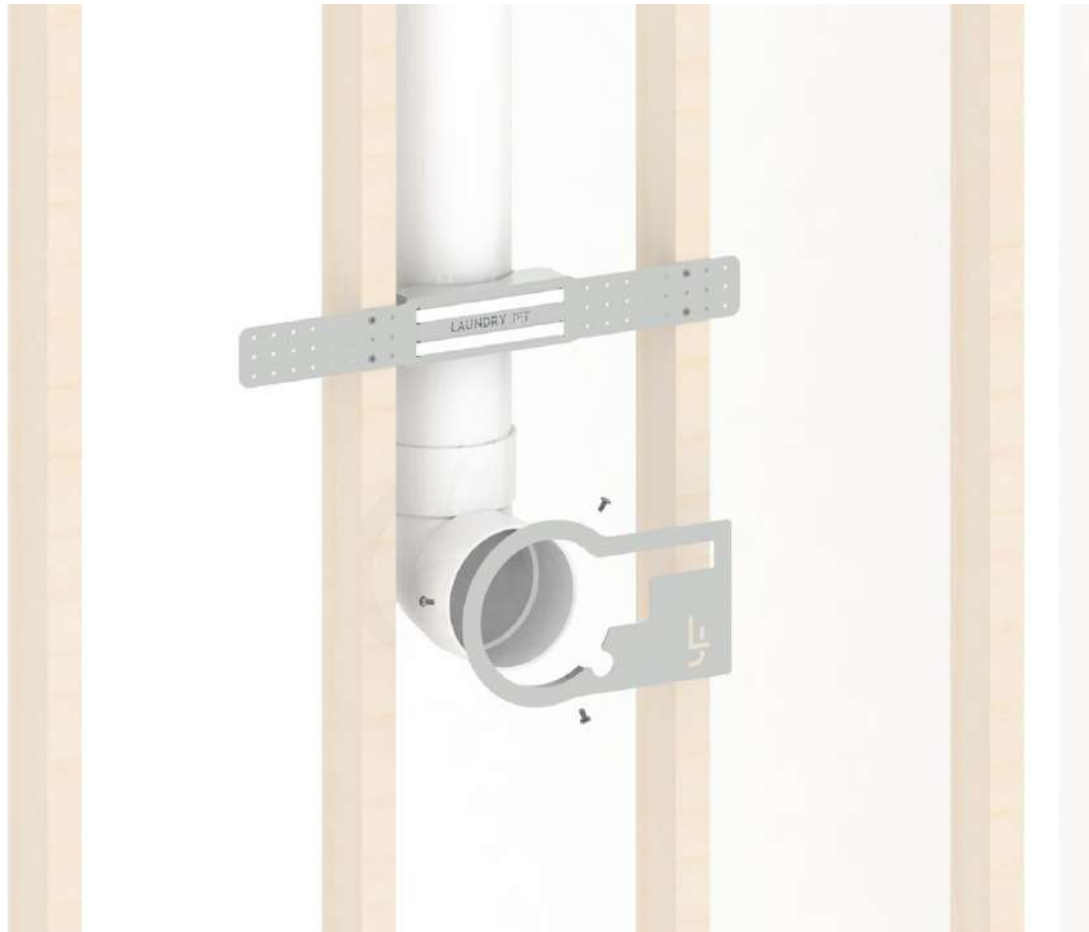


Port 90 Mount Bracket

- Use the Port 90 Mount Bracket to align and secure the Port 90 to the frame
- Set Port height
- Attach 2 pipe clamps
- Set elevation screws
- **Do not install Ports behind doors**



5.2 Step 1 - Port Mount Bracket



Port Mount Bracket

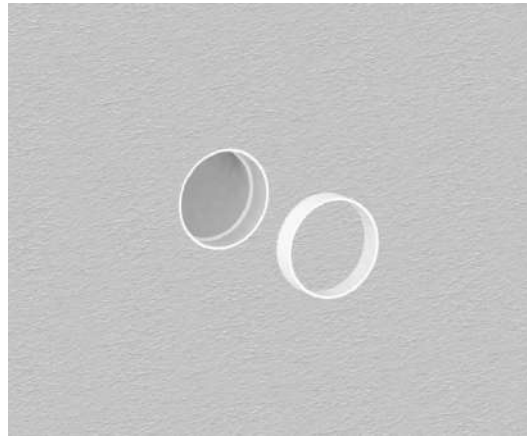
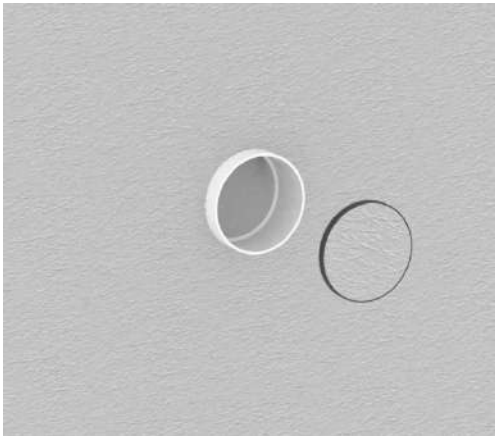
- Mount the Port Mount Bracket around the Port 90
- Make sure the front face of the Port Mount Bracket is flush with the front face of the Port 90 Mount Bracket
- Secure the bracket with the 3 provided screws



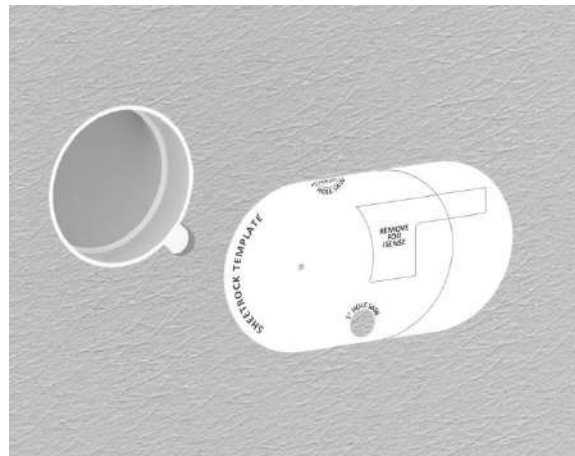
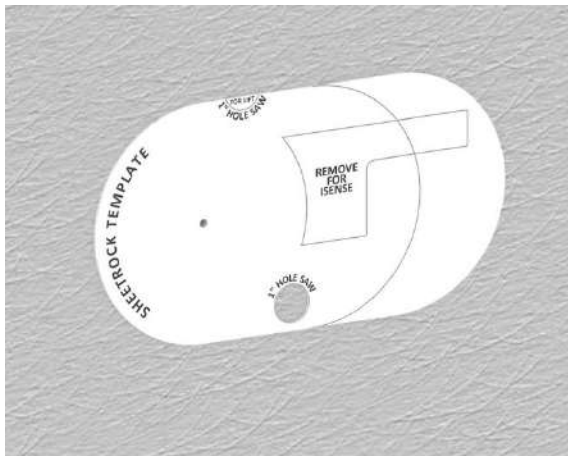
5.3 Step 2 - Slide Sheetrock Template

Sheetrock Template

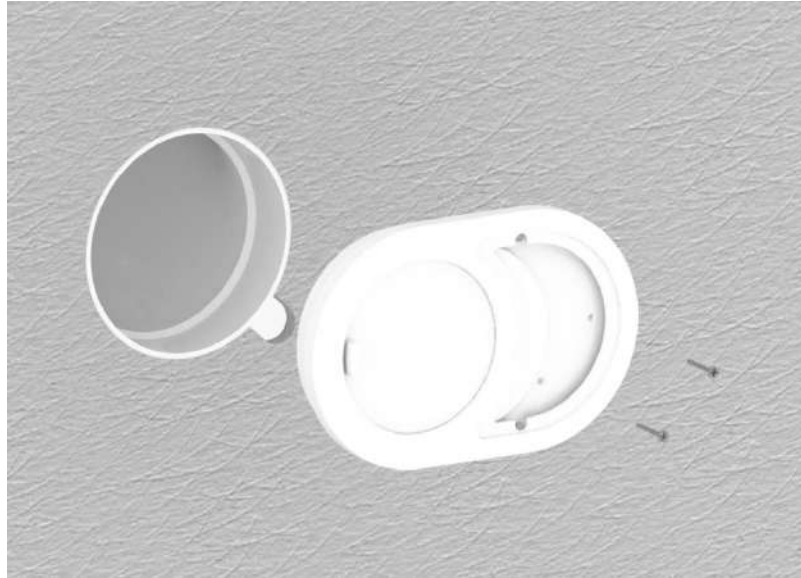
- Install sheetrock over the Port 90 and Port Mount Brackets
- Trim around outside edge of the Port 90 and remove material
- Cut the Port 90 so that it is flush with the sheetrock.



- Remove the section for Slide ports from the Sheetrock Template
- Position the round portion on the back of the template into the Port 90
- Using a level use the top horizontal edge to level the template
- Trace around the inside of the 1" diameter hole in the template
- Using a 1" hole saw, cut a hole through the sheetrock

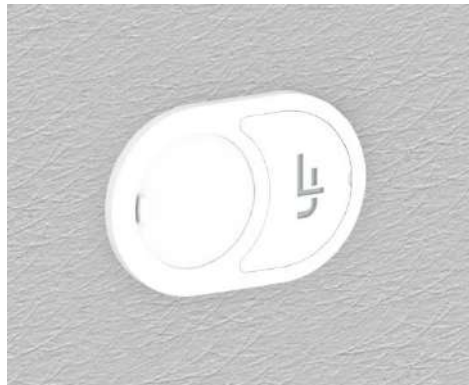
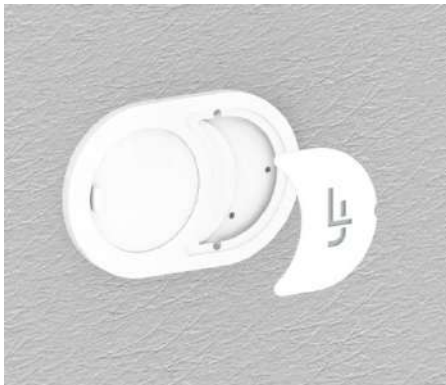


5.4 Step 3 - Slide Port Assembly



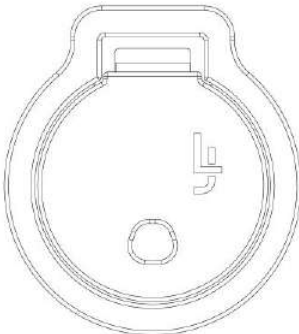
ISlide Port Assembly

- Connect RJ45 male connector to female connector on back of port
- Remove the front logo plate and position the Port into place
- Align Port for final adjustment using a level
- Attach port using 2 Sheet metal screws. For proper door function, the screws must be flush.
- Reattach the front logo plate

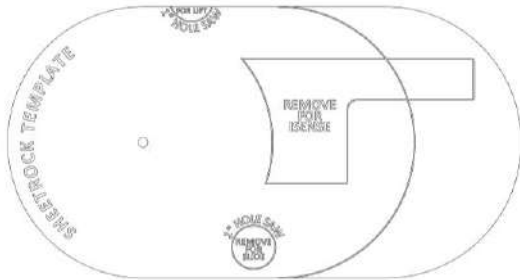


6 Lift Port Installation

Components



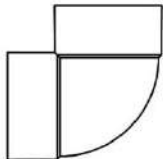
I Sense Port



Sheetrock Template



Port 90 Mount Bracket

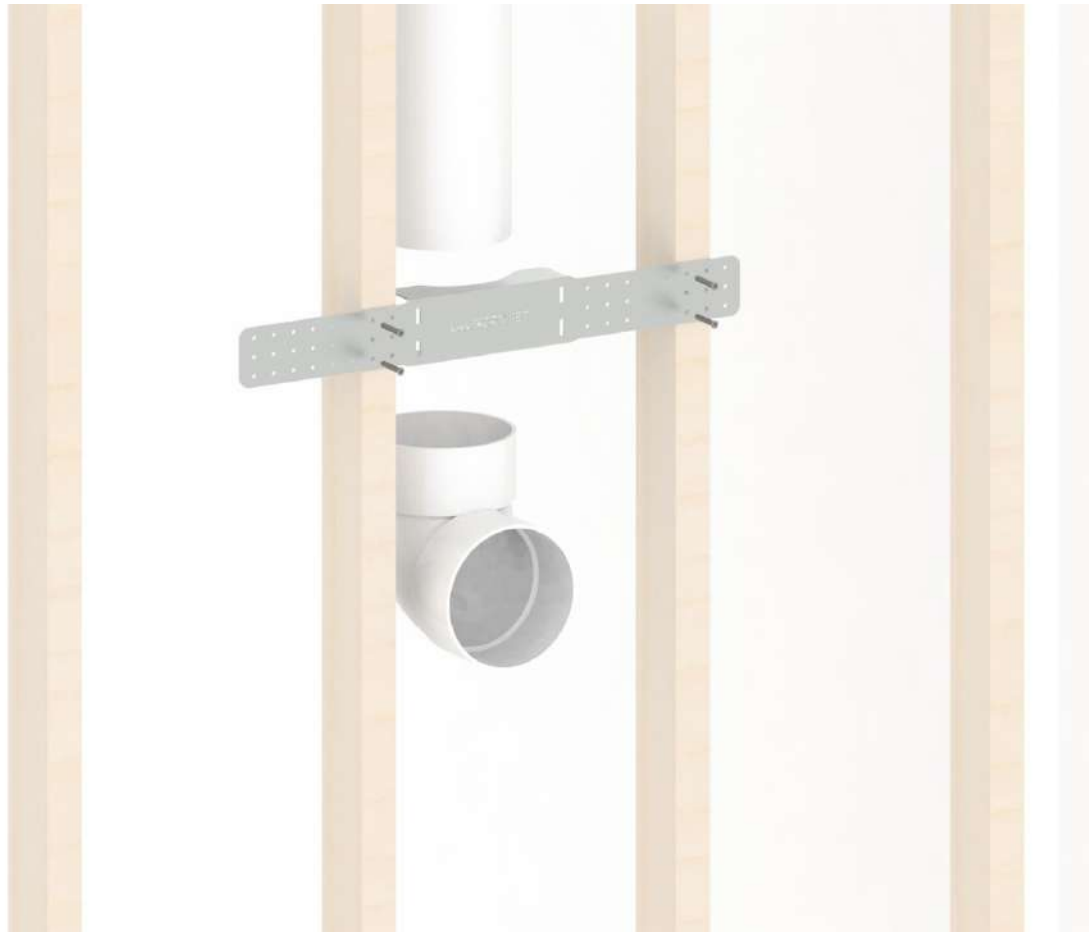


Port 90



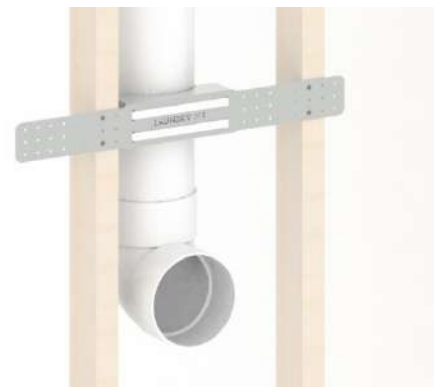
1" Wood Screws

6.1 Step 1 - Port 90 Mount Bracket



Port 90 Mount Bracket

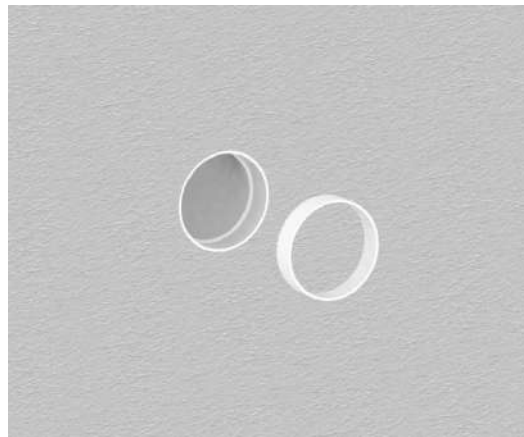
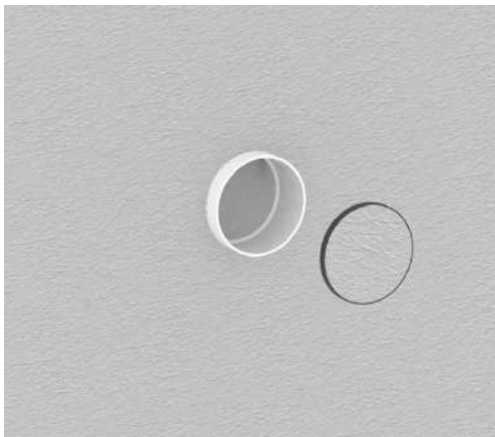
- Use the Port 90 Mount Bracket to align and secure the Port 90 to the frame
- Set Port height
- Attach 2 pipe clamps
- Set elevation screws
- **Do not install Ports behind doors**



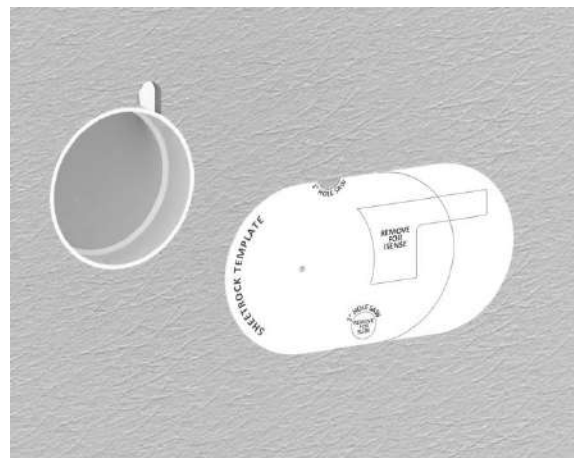
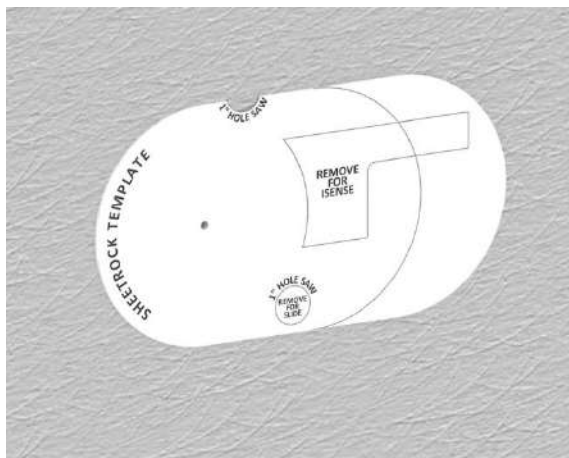
6.2 Step 2 - Lift Port Sheetrock Template

Sheetrock Template

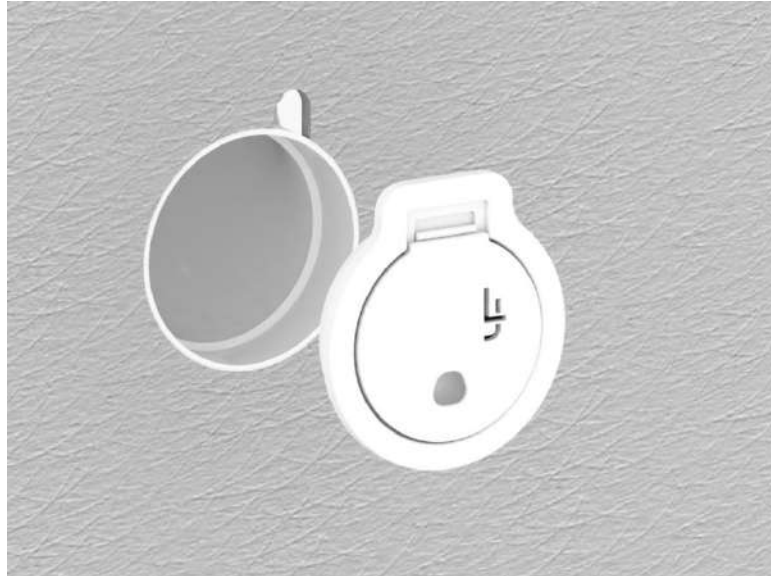
- Install sheetrock over the Port 90 and Port Mount Brackets
- Trim around outside edge of the Port 90 and remove material
- Cut the Port 90 so that it is flush with the sheetrock.



- Remove the section for Lift ports from the Sheetrock Template
- Position the round portion on the back of the template into the Port 90
- Using a level use the top horizontal edge to level the template
- Trace around the inside of the 1" diameter hole in the template
- Using a 1" hole saw, cut a hole through the sheetrock



6.3 Step 3 - Lift Port Assembly



Lift Port Assembly

- Connect RJ45 male connector to female connector on back of port
- Position the Port into place. Align Port for final adjustment using a level



7 Warranty

Lifetime Limited Warranty

Laundry Jet is protected by a 3 year limited lifetime warranty. This warranty is valid from the date of purchase, for as long as you are the original owner, the system remains at its original place of installation and as long as the warranty form has been completed and submitted on our website: <http://www.laundryjet.com/warranty>

- Plastic body of the Laundry Jet Units
- Laundry Jet Posiflo Power unit
- Ports
- Digital Control Board

THIS IS THE SOLE AND EXCLUSIVE WARRANTY OF LIFE FLOW LLC – LAUNDRY JET. IMPLIED WARRANTIES, INCLUDING IMPLIED WARRANTIES OF MERCHANTABILITY OR FITNESS FOR A PARTICULAR PURPOSE ARE LIMITED IN DURATION OF LIMITED WARRANTY PERIOD.

Should any defect in material or workmanship appear within the time of the above warranty, the selling Laundry Jet Dealer should be contacted in the first instance. The Dealer shall repair or replace (at Laundry Jet's sole option), or credit, such part or parts in accordance with the applicable warranty period stated above. Lifeflow, LLC – Laundry Jet shall not be responsible for such service unless provided by an authorized Laundry Jet Dealer utilizing authentic Laundry Jet replacement parts.

This warranty does not apply to loss or damage resulting from (at Laundry Jet's sole discretion) normal wear and tear, vacuum of drywall dust, neglect, abuse acts of God, accidents, improper installation, improper modification or alteration, improper use and operation or failure to provide proper maintenance.

Some countries, states or provinces do not allow exclusion of warranties or limitations of damages, so the above limitations and exclusions may not apply to you. This warranty gives you specific legal rights. You may have additional rights, which vary from State to State, or Province to Province. This limited warranty applies to USA and Canada installations only. For specific warranty information for your Country, consult your authorized Laundry Jet Dealer.

Other warranties apply to other parts of this equipment and optional accessories. Please contact the material accompanying the individual items.

LIFEFLOW, LLC – LAUNDRY JET, SHALL NOT BE RESPONSIBLE FOR ANY CONSEQUENTIAL, INCIDENTAL, OR SPECIAL DAMAGES ARISING FROM THE USE OF THIS SYSTEM.

Extended warranties are available at the time of purchase.

